

SPECIFICATIONS- Edger (CVE-700)

Lens material	Polycarbonate, Plastic, CR-39, High-index, Nano-coated
Lens capacity	Min. Ø 17 mm ; Max. Ø 80 mm
Edging mode	Flat edging, Beveling, Grooving, Safety beveling, Polishing
Display	10.1" touch screen
Interface	USB, LAN
Power input	AC 220V, 50/60 Hz
Power consumption	Max. 1.5 kVA (AC 220V)
Dimension/Weight	640 (W) x 460 (D) x 370 (H) mm/40 kg

SPECIFICATIONS- Tracer (CVT-700)

Method	Automatic 3D binocular tracing
Tracing mode	Auto
Measurement range	Frame 19~70mm (W) , 110~140 mm (L) Pattern Ø 19.0 to 65.0 mm
Interface	USB
Power adaptor	Input: AC 100 to 230 V, 50/60 Hz Output: DC 24V
Power consumption	Max. 60W
Dimension/Weight	310 (W) x 260 (D) x 185 (H) mm/10 kg

CV700 SERIES

Automated Patternless Workstation of Lens



3D Tracing



Anti-Slippery



Multifunctional



Built-in Tracer
and Blocker



Intuitive
Operation



CVE-700 Patternless Edger



Crystalvue

Fully Automatic and All-in-One

CVE-700 is an automatic patternless all-in-one edger. It integrates tracing, blocking, edging, beveling, grooving, polishing, safety beveling, and smart AI functions into one device. Simply set the parameters, the system will automatically start the process and finish with a smart alarm notification, making edging process faster, easier and safer.

Precise Lens Edging and Beautiful Finishing

CVE-700 is equipped with a multi-functional grinding wheelset that is capable of handling various materials such as Polycarbonate, Plastic, CR-39, High-index and Nano-coated lenses with ease. Its functions include grinding, grooving, safety beveling, and polishing. The system also supports a variety of curve modes such as automatic, base curve, frame curve, lens curve, ration curve modes to highly fulfill customized requirements. CVE-700 also features slow-speed grinding function and frame-changing mode, making it easy to replace thicker, harder, or processed lenses with smaller frames.

Exquisite Craftsmanship with Speed and Stability

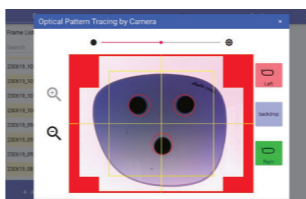
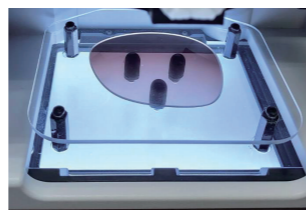
Crystalvue uses micron-level optical-encoder and high-precision ball-screw to ensure the accuracy of lens edging process. The use of integrated motors and spindle drive makes power transmission more stable and powerful. With the advanced multi-functional grinding wheelset, CVE-700 provides exquisite-edged lenses with high efficiency. CVE-700 also features a dual fan system and independent throttle valves that control water spray for optimal cooling and lubrication, improving not only the stability of machine but also the quality of edged lens.

Integrated Optical Tracer

Simply place the pattern or demo lens on the work surface, frame shapes and data can be easily traced and obtained by the built-in smart digital tracing technology without using external tracer.

Built-in Blocker and Centering System

Once the parameters are set, the AI System will automatically identifies the best position for the cup. There will also be a guideline on the screen in real time to assist the attachment, making blocking lens more accurate and faster.

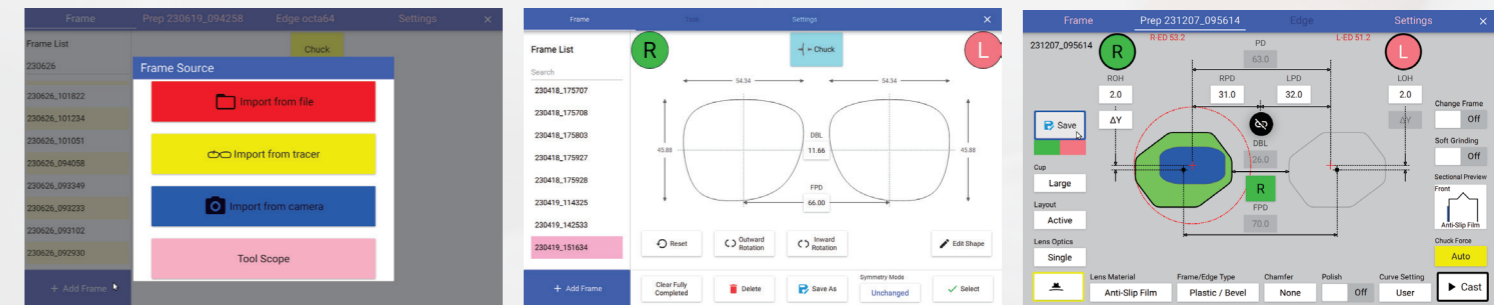


AI-Based Smart System

Crystalvue has developed an exclusive AI technology that optimizes the grinding process, ensuring quick and accurate completion of projects. The technology also helps to effectively extend the life of the grinding wheel. Additionally, users have the option to switch between automatic and manual settings for the curve and adjust the compensation settings to fit their needs. This feature makes it easy for both novice and experienced users to get started with the edging process.

Large Touch Screen with Intuitive Operating Interface

CVE-700's large 10.1" touch screen replaces button setting and makes it easier for users to operate. Also, lens process management function is already built in the software. The user-friendly interface design makes it simple and easy to operate. The instruction and icon are clear and intuitive. Multiple languages are built-in for users to choose.



CVT-700 Automatic 3D Tracer



Fully Automatic and True to Shape

CVT-700 is an automatic 3D binocular tracer. Simply press START, the machine will start tracing and finish the process rapidly. The fully automatic 3D scanning probe is capable of tracking and analyzing frame shapes and grooves, including different materials such as metal frames, plastic frames, and patterns. The system offers lens retouch function that can be used to customize the shape of rimless glasses or adjust the string tension of the half-rim frame to ensure that the lenses fit perfectly.

Parallel Processing and Database Supported

CVT-700 is able to trace the next frame shape while CVE-700 grinding, which improves work efficiency. Each scanned file can be saved in a database for use on multiple grinding machines or for future use.

